

**Dwelling Mix**

Newbury	5 bed det gar	6no
Oakhurst	4 bed int gar	3no
Waddesden	4 bed det gar	11no
Chedworth	4 bed det gar	11no
Winstor	4 bed int gar	23no
Cherryburn	4 bed det gar	9no
Lunley	4 bed det gar	25no
Roseshay	4 bed int gar	28no
Carton	3 bed det gar	12no
Clevedon	3 bed det gar	3no
Hatfield	3 bed det gar	3no
Coleton	3 bed det gar	3no
Souler	3 bed 2 park	41no
Rutford	3 bed int gar	5no
Hambury	3 bed det gar	12no
Penrose	2 bed 2 park	5no
Moulton	2 bed int gar	15no
Runswick	4 bed det gar	17no
Penshaw	3 bed det gar	10no
Social Bung	2 bed 1.5 park	10no
<b>Total</b>	<b>272no</b>	
<b>13.2 Units/acre</b>		
<b>13795sqft/acre</b>		

**Dwelling Mix**

Diamondm	2 5 bed dtb int gar	3no
Maham	5 bed dtb det gar	15no
Wessex 2	5 bed dtb det gar	8no
Temnyson	5 bed dtb int gar	8no
Wessex 1	5 bed dtb int gar	3no
Lowwood	4 bed dtb int gar	3no
Cherryburn	4 bed dtb det gar	9no
Roseshay	4 bed int gar	6no
Childesden	25 bed dtb int gar	5no
Ridlesden	4 bed dtb det gar	2no
Branding	7 bed dtb det gar	11no
Seilthold A	7 bed dtb det gar	2no
Seilthold B	7 bed dtb det gar	8no
<b>Total</b>	<b>7 Units/Acre</b>	<b>84no</b>

Ringwood Hazeldene & Ashbrook  
Site Layout










DATE: 11/2019  
SCALE: 1:1000@A1, 1:2000@A3

PERMISION HOMES  
TESSIE LTD  
BOWBURN NORTH INDUSTRIAL ESTATE  
DURHAM ROAD  
BOWBURN  
COUNTY DURHAM  
DH6 9PF  
Tel: 0191 377400 Fax: 0191 377401

PERMISION HOMES  
TESSIE LTD  
BOWBURN NORTH INDUSTRIAL ESTATE  
DURHAM ROAD  
BOWBURN  
COUNTY DURHAM  
DH6 9PF  
Tel: 0191 377400 Fax: 0191 377401

WRITTEN DIMENSIONS TO BE TAKEN IN PREFERENCE TO SCALE  
ALL DIMENSIONS TO BE CHECKED ON SITE AND ANY DISCREPANCIES REPORTED IMMEDIATELY.



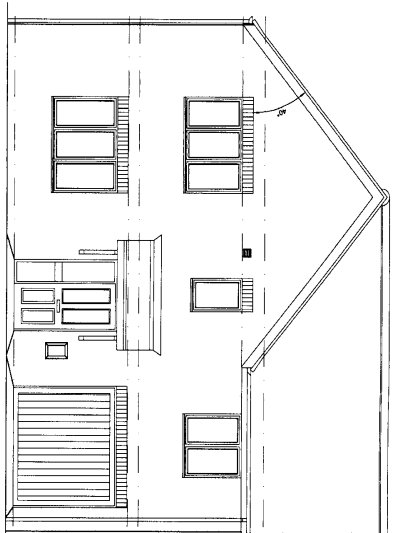
-  Existing vegetation
-  Greenspace corridor
-  Cycleway/footpath
-  Bridleway
-  Proposed woodland
-  Interior Greenspace linkage
-  Entrance to interior greenspace
-  Boulevard
-  Character area

14 DEC 2008  
DATE RECEIVED

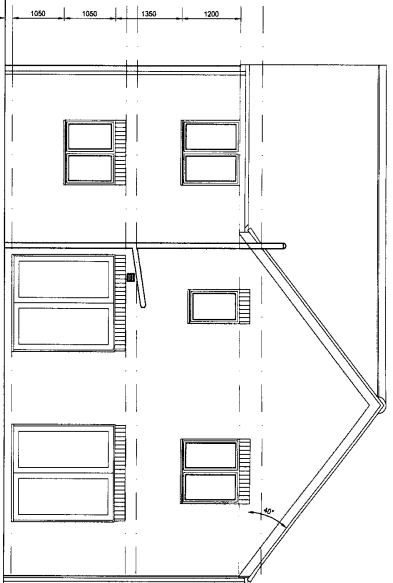
09/3026/---

F	FW	02/12/09	Scale plan updated
E	FW	10/09/09	Character areas annotation added
D	MK	03/09/09	Approved location of greenspace at development
C	MK	02/09/09	Named distinct character areas
B	MK	28/08/09	Added character areas

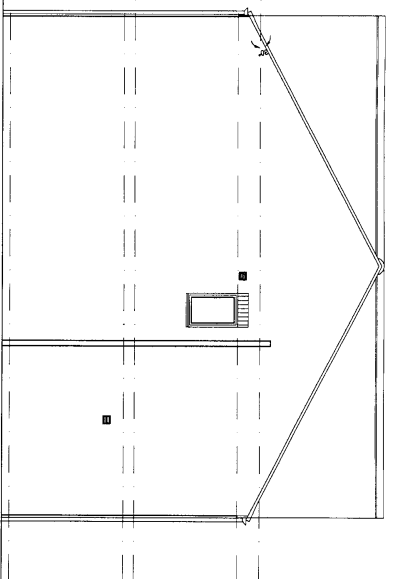




Front Elevation

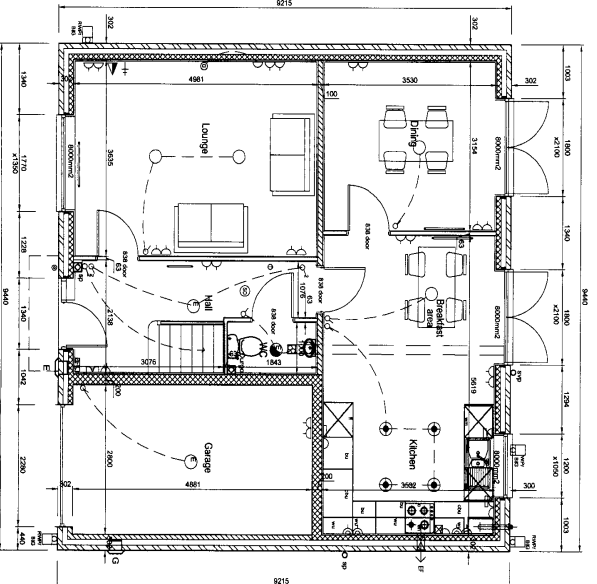


Rear Elevation

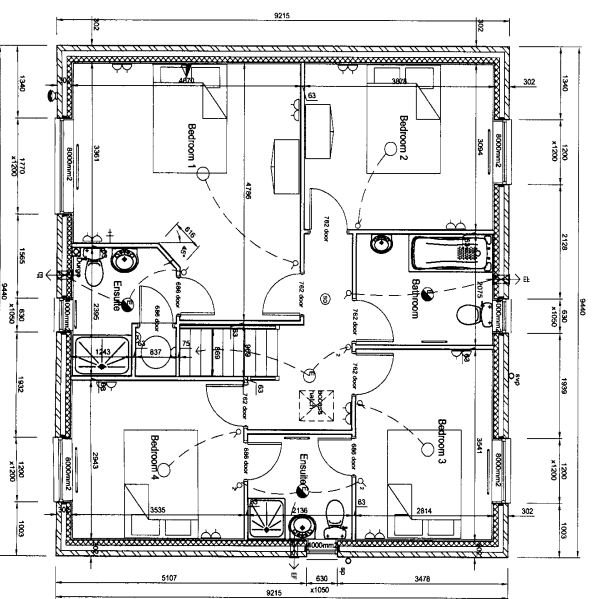


Side Elevation

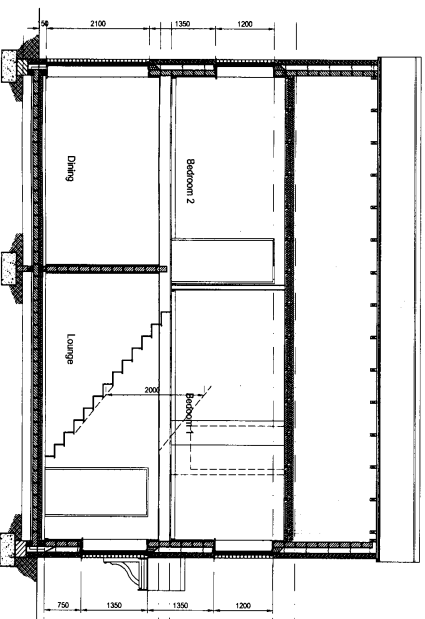
137m<sup>2</sup> 4 bed house requires  
EQUVALENT 65000mm<sup>2</sup> trickle  
ventilation. All vent rates shown  
are EQUVALENT rates - total  
780000mm<sup>2</sup>



Ground Floor



First Floor



Side Elevation

- Electrical Key**
- 1. 13A/15A Socket
  - 2. 13A/15A Socket
  - 3. 13A/15A Socket
  - 4. 13A/15A Socket
  - 5. 13A/15A Socket
  - 6. 13A/15A Socket
  - 7. 13A/15A Socket
  - 8. 13A/15A Socket
  - 9. 13A/15A Socket
  - 10. 13A/15A Socket
  - 11. 13A/15A Socket
  - 12. 13A/15A Socket
  - 13. 13A/15A Socket
  - 14. 13A/15A Socket
  - 15. 13A/15A Socket
  - 16. 13A/15A Socket
  - 17. 13A/15A Socket
  - 18. 13A/15A Socket
  - 19. 13A/15A Socket
  - 20. 13A/15A Socket
  - 21. 13A/15A Socket
  - 22. 13A/15A Socket
  - 23. 13A/15A Socket
  - 24. 13A/15A Socket
  - 25. 13A/15A Socket
  - 26. 13A/15A Socket
  - 27. 13A/15A Socket
  - 28. 13A/15A Socket
  - 29. 13A/15A Socket
  - 30. 13A/15A Socket
  - 31. 13A/15A Socket
  - 32. 13A/15A Socket
  - 33. 13A/15A Socket
  - 34. 13A/15A Socket
  - 35. 13A/15A Socket
  - 36. 13A/15A Socket
  - 37. 13A/15A Socket
  - 38. 13A/15A Socket
  - 39. 13A/15A Socket
  - 40. 13A/15A Socket
  - 41. 13A/15A Socket
  - 42. 13A/15A Socket
  - 43. 13A/15A Socket
  - 44. 13A/15A Socket
  - 45. 13A/15A Socket
  - 46. 13A/15A Socket
  - 47. 13A/15A Socket
  - 48. 13A/15A Socket
  - 49. 13A/15A Socket
  - 50. 13A/15A Socket
  - 51. 13A/15A Socket
  - 52. 13A/15A Socket
  - 53. 13A/15A Socket
  - 54. 13A/15A Socket
  - 55. 13A/15A Socket
  - 56. 13A/15A Socket
  - 57. 13A/15A Socket
  - 58. 13A/15A Socket
  - 59. 13A/15A Socket
  - 60. 13A/15A Socket
  - 61. 13A/15A Socket
  - 62. 13A/15A Socket
  - 63. 13A/15A Socket
  - 64. 13A/15A Socket
  - 65. 13A/15A Socket
  - 66. 13A/15A Socket
  - 67. 13A/15A Socket
  - 68. 13A/15A Socket
  - 69. 13A/15A Socket
  - 70. 13A/15A Socket
  - 71. 13A/15A Socket
  - 72. 13A/15A Socket
  - 73. 13A/15A Socket
  - 74. 13A/15A Socket
  - 75. 13A/15A Socket
  - 76. 13A/15A Socket
  - 77. 13A/15A Socket
  - 78. 13A/15A Socket
  - 79. 13A/15A Socket
  - 80. 13A/15A Socket
  - 81. 13A/15A Socket
  - 82. 13A/15A Socket
  - 83. 13A/15A Socket
  - 84. 13A/15A Socket
  - 85. 13A/15A Socket
  - 86. 13A/15A Socket
  - 87. 13A/15A Socket
  - 88. 13A/15A Socket
  - 89. 13A/15A Socket
  - 90. 13A/15A Socket
  - 91. 13A/15A Socket
  - 92. 13A/15A Socket
  - 93. 13A/15A Socket
  - 94. 13A/15A Socket
  - 95. 13A/15A Socket
  - 96. 13A/15A Socket
  - 97. 13A/15A Socket
  - 98. 13A/15A Socket
  - 99. 13A/15A Socket
  - 100. 13A/15A Socket

**PERSIMMON HOMES**

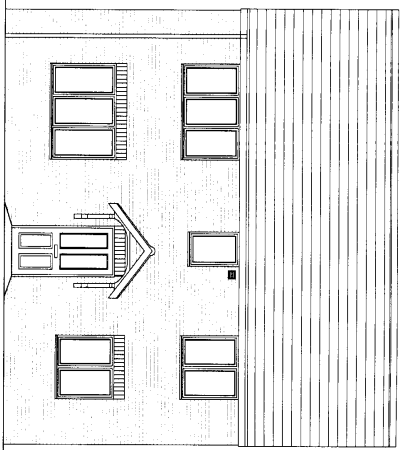
134dsqft  
The Oakhurst  
OK-WD01

100007  
50@A1 - 100@B4  
Plans & Elevations

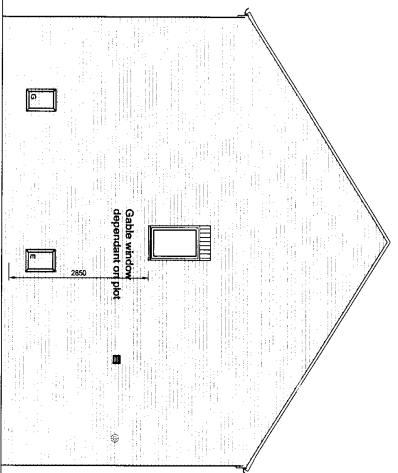




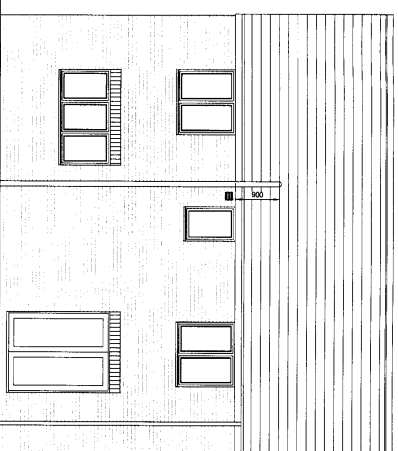




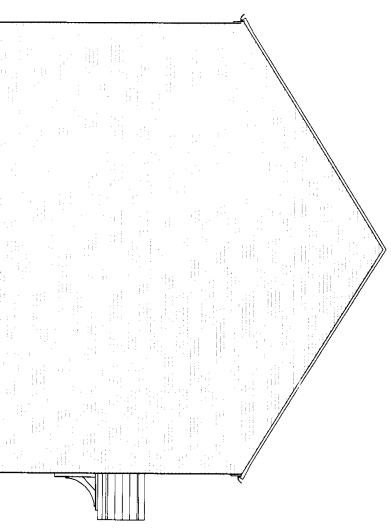
FRONT ELEVATION.



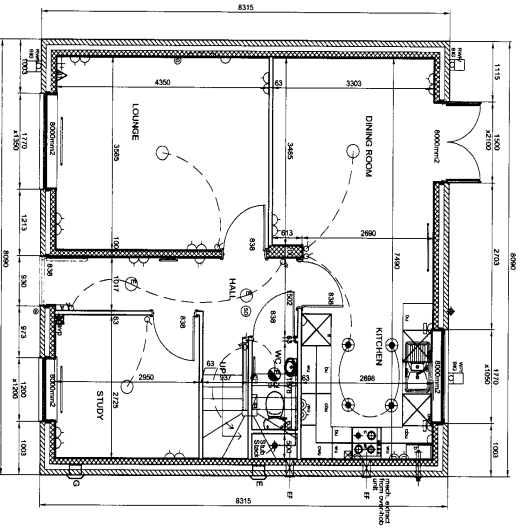
SIDE ELEVATION.



REAR ELEVATION.

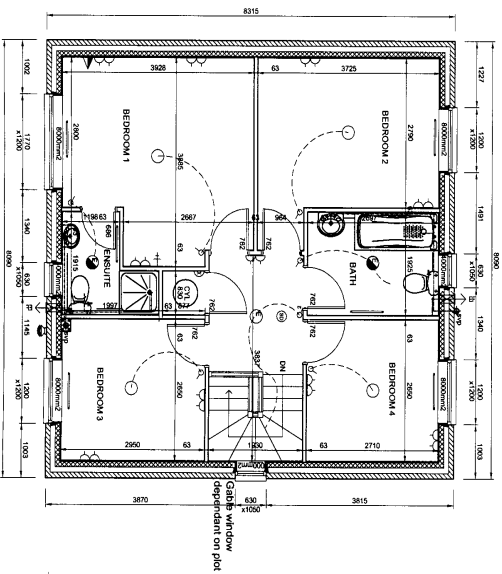


SIDE ELEVATION.

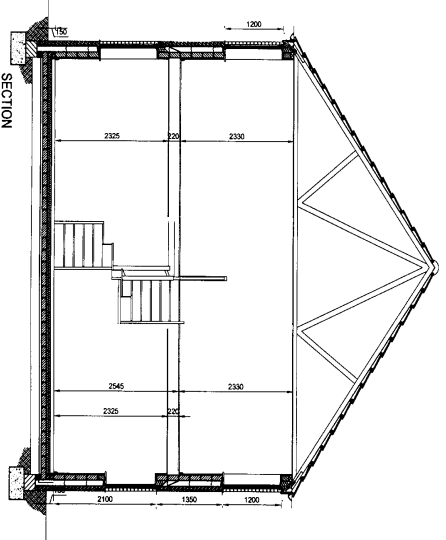


Ground Floor Plan

115m<sup>2</sup> 4 bed house requires EQUIVALENT 55,000mm<sup>2</sup> trickle ventilation. All vent rates shown are EQUIVALENT rates - Total achieved 76,000mm<sup>2</sup>



FIRST FLOOR PLAN.



SECTION

- Electrical Key**
- ⊙ Light
  - ⊙ Socket
  - ⊙ Switch
  - ⊙ 115mm<sup>2</sup> Section cable
  - ⊙ 150mm<sup>2</sup> Section cable
  - ⊙ 200mm<sup>2</sup> Section cable
  - ⊙ 250mm<sup>2</sup> Section cable
  - ⊙ 300mm<sup>2</sup> Section cable
  - ⊙ 350mm<sup>2</sup> Section cable
  - ⊙ 400mm<sup>2</sup> Section cable
  - ⊙ 450mm<sup>2</sup> Section cable
  - ⊙ 500mm<sup>2</sup> Section cable
  - ⊙ 550mm<sup>2</sup> Section cable
  - ⊙ 600mm<sup>2</sup> Section cable
  - ⊙ 650mm<sup>2</sup> Section cable
  - ⊙ 700mm<sup>2</sup> Section cable
  - ⊙ 750mm<sup>2</sup> Section cable
  - ⊙ 800mm<sup>2</sup> Section cable
  - ⊙ 850mm<sup>2</sup> Section cable
  - ⊙ 900mm<sup>2</sup> Section cable
  - ⊙ 950mm<sup>2</sup> Section cable
  - ⊙ 1000mm<sup>2</sup> Section cable
  - ⊙ 1050mm<sup>2</sup> Section cable
  - ⊙ 1100mm<sup>2</sup> Section cable
  - ⊙ 1150mm<sup>2</sup> Section cable
  - ⊙ 1200mm<sup>2</sup> Section cable
  - ⊙ 1250mm<sup>2</sup> Section cable
  - ⊙ 1300mm<sup>2</sup> Section cable
  - ⊙ 1350mm<sup>2</sup> Section cable
  - ⊙ 1400mm<sup>2</sup> Section cable
  - ⊙ 1450mm<sup>2</sup> Section cable
  - ⊙ 1500mm<sup>2</sup> Section cable
  - ⊙ 1550mm<sup>2</sup> Section cable
  - ⊙ 1600mm<sup>2</sup> Section cable
  - ⊙ 1650mm<sup>2</sup> Section cable
  - ⊙ 1700mm<sup>2</sup> Section cable
  - ⊙ 1750mm<sup>2</sup> Section cable
  - ⊙ 1800mm<sup>2</sup> Section cable
  - ⊙ 1850mm<sup>2</sup> Section cable
  - ⊙ 1900mm<sup>2</sup> Section cable
  - ⊙ 1950mm<sup>2</sup> Section cable
  - ⊙ 2000mm<sup>2</sup> Section cable
  - ⊙ 2050mm<sup>2</sup> Section cable
  - ⊙ 2100mm<sup>2</sup> Section cable
  - ⊙ 2150mm<sup>2</sup> Section cable
  - ⊙ 2200mm<sup>2</sup> Section cable
  - ⊙ 2250mm<sup>2</sup> Section cable
  - ⊙ 2300mm<sup>2</sup> Section cable
  - ⊙ 2350mm<sup>2</sup> Section cable
  - ⊙ 2400mm<sup>2</sup> Section cable
  - ⊙ 2450mm<sup>2</sup> Section cable
  - ⊙ 2500mm<sup>2</sup> Section cable
  - ⊙ 2550mm<sup>2</sup> Section cable
  - ⊙ 2600mm<sup>2</sup> Section cable
  - ⊙ 2650mm<sup>2</sup> Section cable
  - ⊙ 2700mm<sup>2</sup> Section cable
  - ⊙ 2750mm<sup>2</sup> Section cable
  - ⊙ 2800mm<sup>2</sup> Section cable
  - ⊙ 2850mm<sup>2</sup> Section cable
  - ⊙ 2900mm<sup>2</sup> Section cable
  - ⊙ 2950mm<sup>2</sup> Section cable
  - ⊙ 3000mm<sup>2</sup> Section cable
  - ⊙ 3050mm<sup>2</sup> Section cable
  - ⊙ 3100mm<sup>2</sup> Section cable
  - ⊙ 3150mm<sup>2</sup> Section cable
  - ⊙ 3200mm<sup>2</sup> Section cable
  - ⊙ 3250mm<sup>2</sup> Section cable
  - ⊙ 3300mm<sup>2</sup> Section cable
  - ⊙ 3350mm<sup>2</sup> Section cable
  - ⊙ 3400mm<sup>2</sup> Section cable
  - ⊙ 3450mm<sup>2</sup> Section cable
  - ⊙ 3500mm<sup>2</sup> Section cable
  - ⊙ 3550mm<sup>2</sup> Section cable
  - ⊙ 3600mm<sup>2</sup> Section cable
  - ⊙ 3650mm<sup>2</sup> Section cable
  - ⊙ 3700mm<sup>2</sup> Section cable
  - ⊙ 3750mm<sup>2</sup> Section cable
  - ⊙ 3800mm<sup>2</sup> Section cable
  - ⊙ 3850mm<sup>2</sup> Section cable
  - ⊙ 3900mm<sup>2</sup> Section cable
  - ⊙ 3950mm<sup>2</sup> Section cable
  - ⊙ 4000mm<sup>2</sup> Section cable
  - ⊙ 4050mm<sup>2</sup> Section cable
  - ⊙ 4100mm<sup>2</sup> Section cable
  - ⊙ 4150mm<sup>2</sup> Section cable
  - ⊙ 4200mm<sup>2</sup> Section cable
  - ⊙ 4250mm<sup>2</sup> Section cable
  - ⊙ 4300mm<sup>2</sup> Section cable
  - ⊙ 4350mm<sup>2</sup> Section cable
  - ⊙ 4400mm<sup>2</sup> Section cable
  - ⊙ 4450mm<sup>2</sup> Section cable
  - ⊙ 4500mm<sup>2</sup> Section cable
  - ⊙ 4550mm<sup>2</sup> Section cable
  - ⊙ 4600mm<sup>2</sup> Section cable
  - ⊙ 4650mm<sup>2</sup> Section cable
  - ⊙ 4700mm<sup>2</sup> Section cable
  - ⊙ 4750mm<sup>2</sup> Section cable
  - ⊙ 4800mm<sup>2</sup> Section cable
  - ⊙ 4850mm<sup>2</sup> Section cable
  - ⊙ 4900mm<sup>2</sup> Section cable
  - ⊙ 4950mm<sup>2</sup> Section cable
  - ⊙ 5000mm<sup>2</sup> Section cable
  - ⊙ 5050mm<sup>2</sup> Section cable
  - ⊙ 5100mm<sup>2</sup> Section cable
  - ⊙ 5150mm<sup>2</sup> Section cable
  - ⊙ 5200mm<sup>2</sup> Section cable
  - ⊙ 5250mm<sup>2</sup> Section cable
  - ⊙ 5300mm<sup>2</sup> Section cable
  - ⊙ 5350mm<sup>2</sup> Section cable
  - ⊙ 5400mm<sup>2</sup> Section cable
  - ⊙ 5450mm<sup>2</sup> Section cable
  - ⊙ 5500mm<sup>2</sup> Section cable
  - ⊙ 5550mm<sup>2</sup> Section cable
  - ⊙ 5600mm<sup>2</sup> Section cable
  - ⊙ 5650mm<sup>2</sup> Section cable
  - ⊙ 5700mm<sup>2</sup> Section cable
  - ⊙ 5750mm<sup>2</sup> Section cable
  - ⊙ 5800mm<sup>2</sup> Section cable
  - ⊙ 5850mm<sup>2</sup> Section cable
  - ⊙ 5900mm<sup>2</sup> Section cable
  - ⊙ 5950mm<sup>2</sup> Section cable
  - ⊙ 6000mm<sup>2</sup> Section cable
  - ⊙ 6050mm<sup>2</sup> Section cable
  - ⊙ 6100mm<sup>2</sup> Section cable
  - ⊙ 6150mm<sup>2</sup> Section cable
  - ⊙ 6200mm<sup>2</sup> Section cable
  - ⊙ 6250mm<sup>2</sup> Section cable
  - ⊙ 6300mm<sup>2</sup> Section cable
  - ⊙ 6350mm<sup>2</sup> Section cable
  - ⊙ 6400mm<sup>2</sup> Section cable
  - ⊙ 6450mm<sup>2</sup> Section cable
  - ⊙ 6500mm<sup>2</sup> Section cable
  - ⊙ 6550mm<sup>2</sup> Section cable
  - ⊙ 6600mm<sup>2</sup> Section cable
  - ⊙ 6650mm<sup>2</sup> Section cable
  - ⊙ 6700mm<sup>2</sup> Section cable
  - ⊙ 6750mm<sup>2</sup> Section cable
  - ⊙ 6800mm<sup>2</sup> Section cable
  - ⊙ 6850mm<sup>2</sup> Section cable
  - ⊙ 6900mm<sup>2</sup> Section cable
  - ⊙ 6950mm<sup>2</sup> Section cable
  - ⊙ 7000mm<sup>2</sup> Section cable
  - ⊙ 7050mm<sup>2</sup> Section cable
  - ⊙ 7100mm<sup>2</sup> Section cable
  - ⊙ 7150mm<sup>2</sup> Section cable
  - ⊙ 7200mm<sup>2</sup> Section cable
  - ⊙ 7250mm<sup>2</sup> Section cable
  - ⊙ 7300mm<sup>2</sup> Section cable
  - ⊙ 7350mm<sup>2</sup> Section cable
  - ⊙ 7400mm<sup>2</sup> Section cable
  - ⊙ 7450mm<sup>2</sup> Section cable
  - ⊙ 7500mm<sup>2</sup> Section cable
  - ⊙ 7550mm<sup>2</sup> Section cable
  - ⊙ 7600mm<sup>2</sup> Section cable
  - ⊙ 7650mm<sup>2</sup> Section cable
  - ⊙ 7700mm<sup>2</sup> Section cable
  - ⊙ 7750mm<sup>2</sup> Section cable
  - ⊙ 7800mm<sup>2</sup> Section cable
  - ⊙ 7850mm<sup>2</sup> Section cable
  - ⊙ 7900mm<sup>2</sup> Section cable
  - ⊙ 7950mm<sup>2</sup> Section cable
  - ⊙ 8000mm<sup>2</sup> Section cable
  - ⊙ 8050mm<sup>2</sup> Section cable
  - ⊙ 8100mm<sup>2</sup> Section cable
  - ⊙ 8150mm<sup>2</sup> Section cable
  - ⊙ 8200mm<sup>2</sup> Section cable
  - ⊙ 8250mm<sup>2</sup> Section cable
  - ⊙ 8300mm<sup>2</sup> Section cable
  - ⊙ 8350mm<sup>2</sup> Section cable
  - ⊙ 8400mm<sup>2</sup> Section cable
  - ⊙ 8450mm<sup>2</sup> Section cable
  - ⊙ 8500mm<sup>2</sup> Section cable
  - ⊙ 8550mm<sup>2</sup> Section cable
  - ⊙ 8600mm<sup>2</sup> Section cable
  - ⊙ 8650mm<sup>2</sup> Section cable
  - ⊙ 8700mm<sup>2</sup> Section cable
  - ⊙ 8750mm<sup>2</sup> Section cable
  - ⊙ 8800mm<sup>2</sup> Section cable
  - ⊙ 8850mm<sup>2</sup> Section cable
  - ⊙ 8900mm<sup>2</sup> Section cable
  - ⊙ 8950mm<sup>2</sup> Section cable
  - ⊙ 9000mm<sup>2</sup> Section cable
  - ⊙ 9050mm<sup>2</sup> Section cable
  - ⊙ 9100mm<sup>2</sup> Section cable
  - ⊙ 9150mm<sup>2</sup> Section cable
  - ⊙ 9200mm<sup>2</sup> Section cable
  - ⊙ 9250mm<sup>2</sup> Section cable
  - ⊙ 9300mm<sup>2</sup> Section cable
  - ⊙ 9350mm<sup>2</sup> Section cable
  - ⊙ 9400mm<sup>2</sup> Section cable
  - ⊙ 9450mm<sup>2</sup> Section cable
  - ⊙ 9500mm<sup>2</sup> Section cable
  - ⊙ 9550mm<sup>2</sup> Section cable
  - ⊙ 9600mm<sup>2</sup> Section cable
  - ⊙ 9650mm<sup>2</sup> Section cable
  - ⊙ 9700mm<sup>2</sup> Section cable
  - ⊙ 9750mm<sup>2</sup> Section cable
  - ⊙ 9800mm<sup>2</sup> Section cable
  - ⊙ 9850mm<sup>2</sup> Section cable
  - ⊙ 9900mm<sup>2</sup> Section cable
  - ⊙ 9950mm<sup>2</sup> Section cable
  - ⊙ 10000mm<sup>2</sup> Section cable

Rev A - Elevation & OB to new regs. pre-2017 13/01/19 MR

**PERSIMMON HOMES**

1222sqft

Cherryburn 20407

CY-WDD01 50@A1, 100@A3

Plans & Elevations





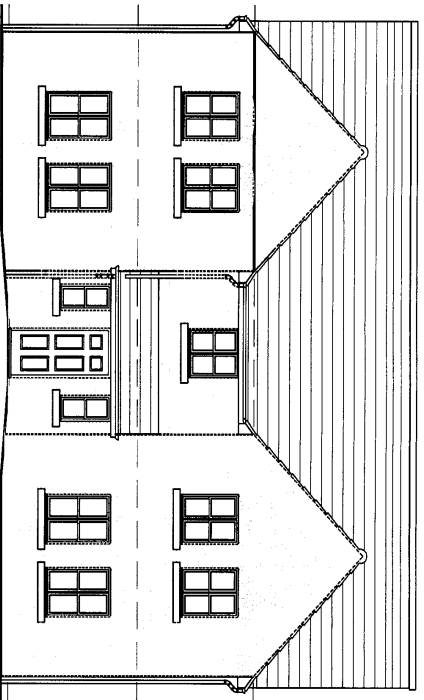




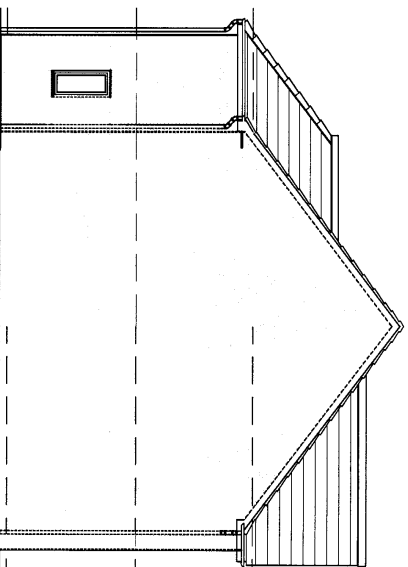




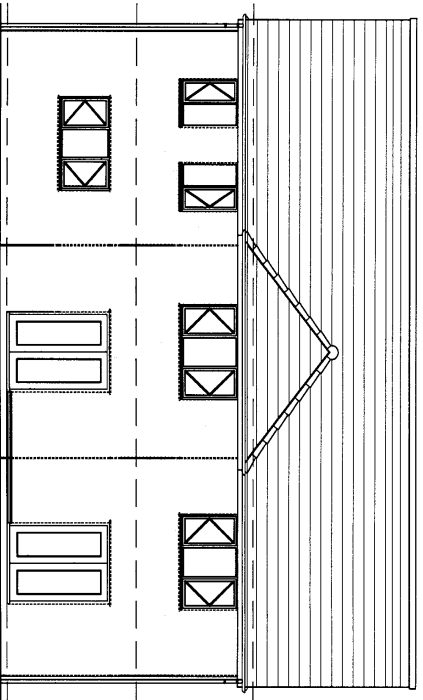




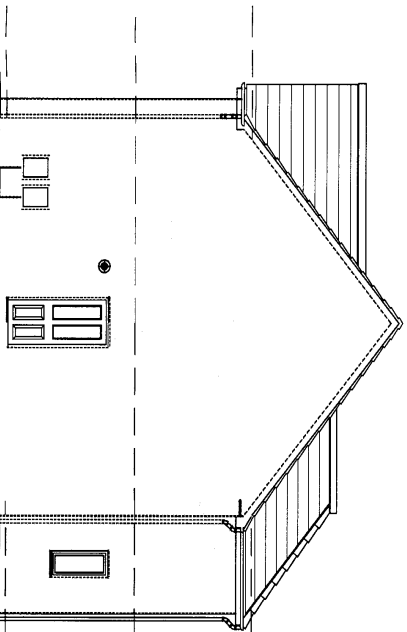
Front Elevation



Side Elevation



Rear Elevation



Side Elevation

Rev	Notes	Date

Drawing Revisions

Notes

Project

Title	
Branding 100 House Type - Planning Elevations AS	
Drawing No	Rev
1844-24	-
Scale	Date
1:100@A3	Dec 06
Drawn	RG

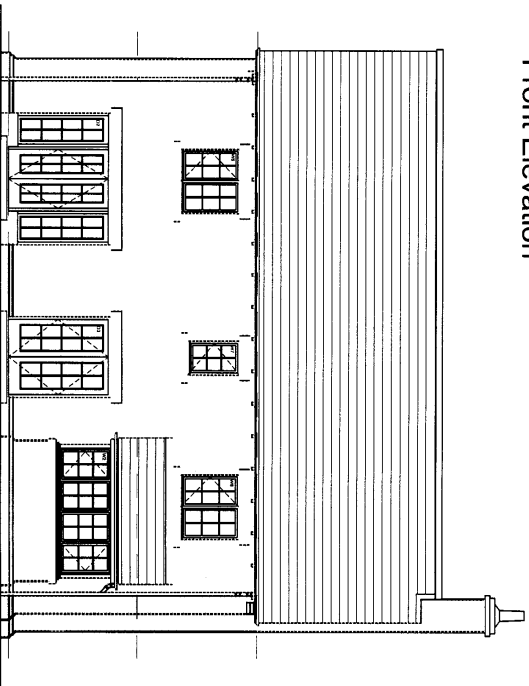


**CHARLES CHURCH**

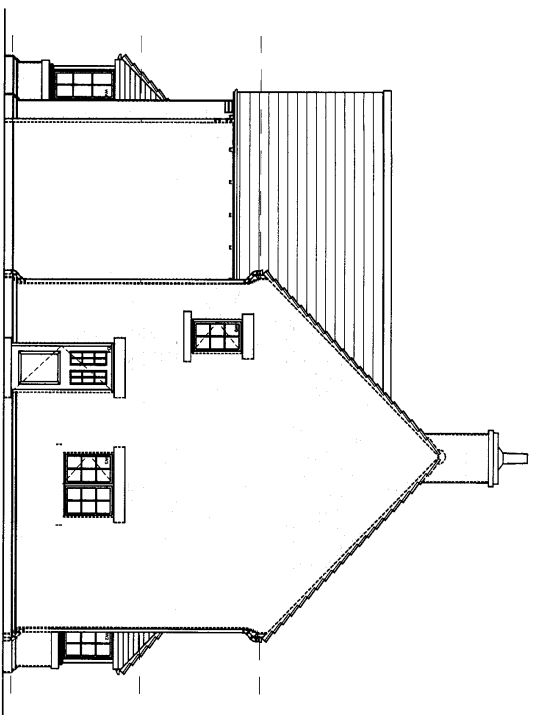
CHARLES CHURCH NORTH EAST  
 BOWBURN NORTH INDUSTRIAL ESTATE  
 DURHAM ROAD  
 BOWBURN  
 DURHAM  
 DH6 5PF



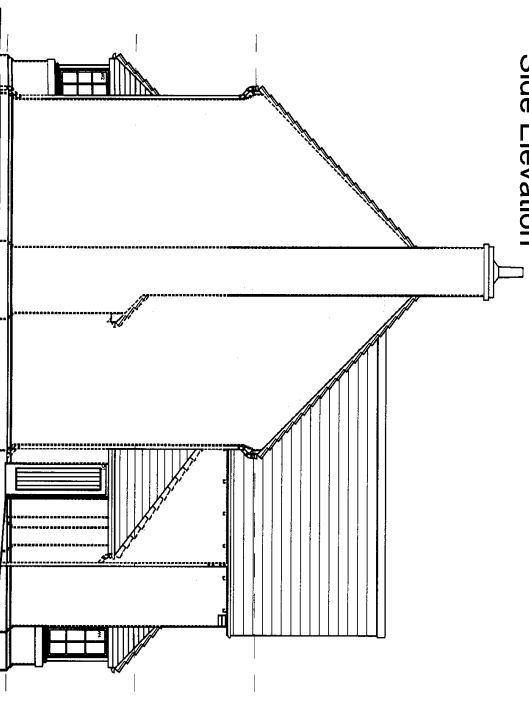
Front Elevation



Rear Elevation



Side Elevation



Side Elevation

Rev	Notes	Date
Drawing Revisions		
Notes		

Project

Title		
Cherryburn 100 House Type-Planning - AS		
Drawing No		Rev
1499-24		-
Scale	Date	Drawn
1:100@A3	Dec 06	RG

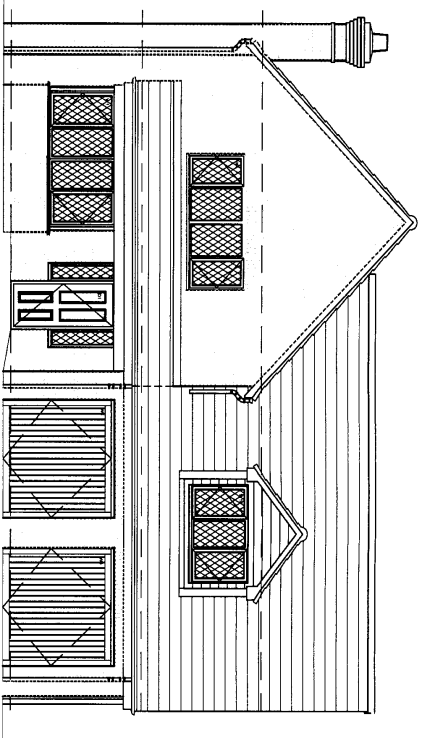


**CHARLES CHURCH**

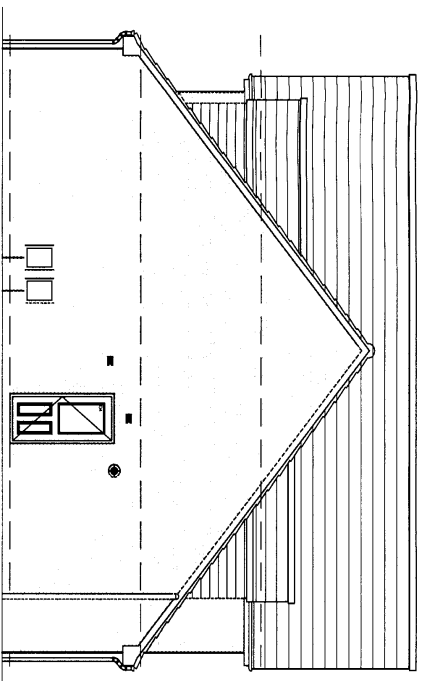
CHARLES CHURCH NORTH EAST  
BOWBURN NORTH INDUSTRIAL ESTATE  
DURHAM ROAD  
BOWBURN  
DURHAM

Tel No: 0191 377 4000  
DH6 5PF  
Fax No: 0191 377 4001

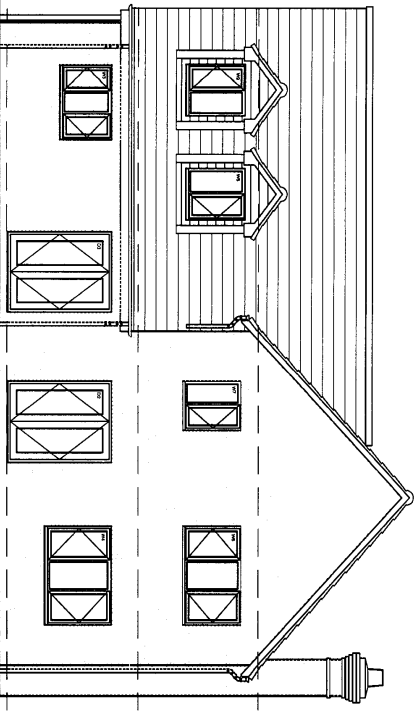




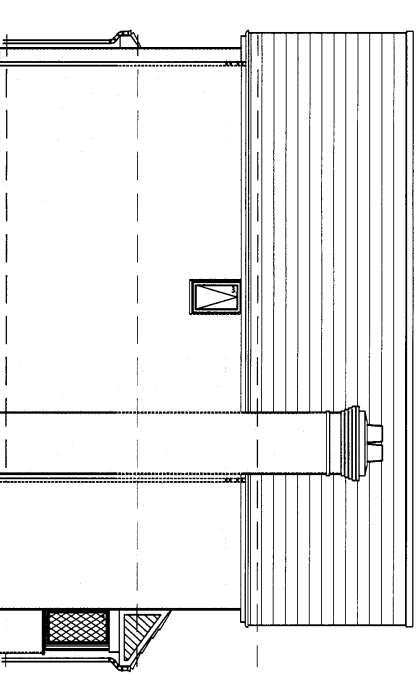
Front Elevation.



Side Elevation.



Rear Elevation.



Side Elevation.

Rev	Notes	Date

Drawing Revisions

Notes

Project

Title  
Loxwood 100 House Type - Planning Elevations - AS

Drawing No  
1925-18

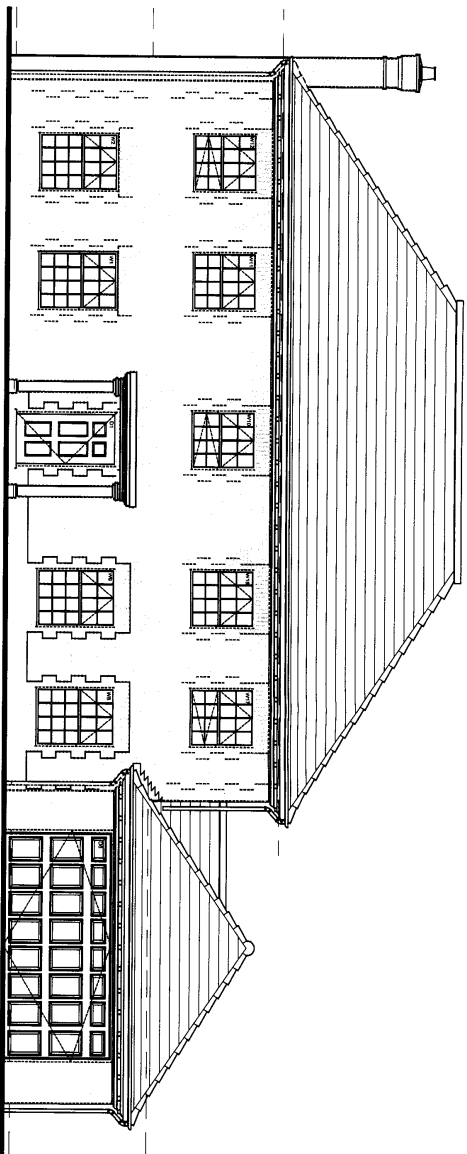
Rev  
-

Scale	Date	Drawn
1:100	Dec 06	RG

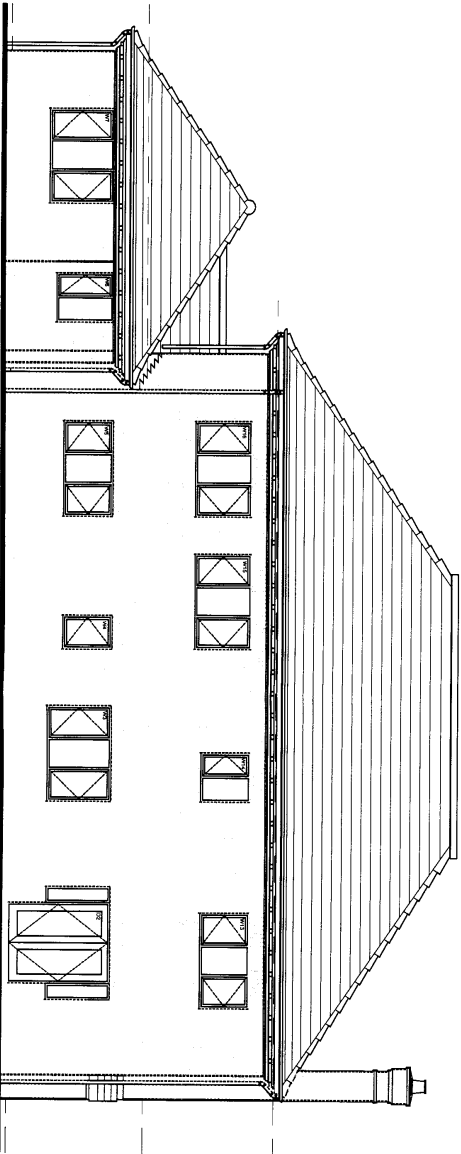


**CHARLES CHURCH**

CHARLES CHURCH NORTH EAST  
BOWBURN NORTH INDUSTRIAL ESTATE  
DURHAM ROAD  
BOWBURN  
DURHAM  
DH6 5PF  
Tel No: 0191 377 4000  
Fax No: 0191 377 4001



Front Elevation



Rear Elevation

Rev	Notes	Date
Drawing Revisions		
Notes		

Project

Title		
Wessex 1 100 House Type - Planning Elevations AS		
Drawing No	Rev	
2446-25	-	
Scale	Date	Drawn
1:100	Jan 07	RG



**CHARLES CHURCH**

CHARLES CHURCH NORTH EAST  
 BOWBURN NORTH INDUSTRIAL ESTATE  
 DURHAM ROAD  
 BOWBURN  
 DURHAM  
 DH6 5PF